

COMPANY  
PROFILE AND  
PRE QUALIFICATION  
2025



شركة انجاز البناء العالمي  
GLOBAL BUILDING COMPLETION COMPANY

# GLOBAL BUILDING COMPLETION COMPANY



شركة انجاز البناء العالمي  
GLOBAL BUILDING COMPLETION COMPANY

# CONTENTS

- Intriduction
- Our Company
- GM MESSAGES
- Our Experience
- Our Mission
- Our Services
- Our Aspiration
- Our Vision
- Our Value Of Principles
- Our Styles
- Our Quality
- Our Projects
- Certificates



# INTRODUCTION

## BRIEF HISTORY

WE HEREBY TAKE THIS OPPORTUNITY TO INTRODUCE OURSELVES AS ONE OF THE ESTABLISHED CONSTRUCTION COMPANY IN THE KINGDOM OF SAUDI ARABIA. Global Building Completion Company. GBCC-STARTED OPERATION IN 2010 IN JEDDAH, SAUDI ARABIA WITH JOINT VENTURE UNDER THE RE- ORGANIZATION EXPANSION PROGRAM.

G B C C HAS VAST EXPERIENCE IN THE CONSTRUCTION SECTOR & SPECIALIZED FOR HOTEL AND RESIDENTIAL OR INDUSTRIAL BUILDING IN INTERIOR FINISHING FITOUT,

MAINTENANCE AND WATERPROOFING, CONCRETE REPAIR AND COMPLETED PROJECTS INCLUDE GOVERNMENT & SEMI GOVERNMENT & PUBLIC SECTOR WIDELY IN KINGDOM

In 2010 Global Building Completion Company established MENT was born competing among top contracting companies in the Kingdom with a very minimal workforce.

Five years later in 2015, Mr. Yasser Mohammed Asseri the general manager, opened up and institutionalized Global building Completion Co.





# OBJECTIVE

Our main goal is to exceed the Client's satisfaction by giving them the final accepted project in a very reasonable price, inclusive of all supporting consultation and needed service.

General Contracting

Building Internal FITOUT, Civil Structural, Interior finishing, External cladding and profiling, Fencing

Building and industrial Water proofing, for Water Tanks, Roofing, wet areas

Epoxy application for parking and flooring for residential and industrial lines Management and Support Services

Type of Company: Saudi Entirely-Owned Company



## COMPANY NAME

GLOBAL BUILDING COMPLETION  
COMPANY



## OFFICE ADDRESS

DIST. SALAMA. MEDINA RD JED.2  
3437



## NUMBERS

00966563265594



# TYPE OF SERVICE OFFERED:

# COMPANY QUALIFICATION IN CONSTRUCTION

- Residential Building Internal External Finishing
- Residential Compounds maintenance and finishing
- Showrooms and Complex Structures Finishing
- Industrial Factories and Warehouses and Buildings water proofing
- Parking and hardscaping finishing
- Offices and Establishments Buildings in Fabrication
- Steel Structures for Factories and Warehouses installation
- Sport Complex and Gymnasium Buildings Finishing



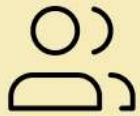
Our main goal is to exceed the Client's satisfaction by giving them the final accepted project in a very reasonable price, inclusive of all supporting consultation and needed service.





We always try to give more value & innovation to the business needed with creative & efficient solution more than you can think.

# GLOBAL BUILDING HISTORY

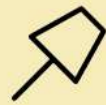


**CURRENT EMPLOYEE**

---

**520 Employee**

---



**GLOBAL OFFICE**

---

**The Main Branch**

---



**PROJECT DONE**

---

**More than 45 Projects**

---





## OUR EXPERIENCE

Global Building Completion Company (GBCC), established in 2010 in Jeddah, Saudi Arabia, is an experienced general contracting and construction company specializing in hotel, residential, and industrial building projects. GBCC has extensive expertise in delivering high-quality interior finishing, fit-out works, waterproofing, epoxy flooring, maintenance, and concrete repair services. Over the years, the company has successfully completed a wide range of projects for government, semi-government, and public sector clients across the Kingdom. Notable projects include luxury hotels such as Four Points by Sheraton Makkah, Oasis Hotel Jeddah, and Raffles Hotel Jeddah, where GBCC carried out full interior works including gypsum partitions, ceilings, marble and ceramic tiling, and complete waterproofing systems.



OUR EXPERIENCE IS YOUR ADVANTAGE.

# OUR MISSION

At Global Building Completion Company (GBCC), our mission is to exceed our clients' expectations by delivering high-quality construction and fit-out solutions at competitive prices.

We aim to provide complete, reliable services — from consultation to project completion — ensuring that every project meets the highest standards of safety, workmanship, and client satisfaction. Through continuous improvement, professional management, and dedicated teams..

---

Our mission is to deliver high-quality construction and finishing services that exceed our clients' expectations. We aim to complete every project on time and at a competitive cost, while providing full support, consultation, and professional management. We are committed to maintaining high standards of safety, quality, and customer satisfaction in every project we undertake across the Kingdom of Saudi Arabia.

---

Our mission is to deliver high-quality construction and finishing services that exceed our clients' expectations. We aim to complete every project on time and at a competitive cost, while providing full support, consultation, and professional management. We are committed to maintaining high standards of safety, quality, and customer satisfaction in every project we undertake across the Kingdom of Saudi Arabia.

---

Our mission is to deliver high-quality construction and finishing services that exceed our clients' expectations. We aim to complete every project on time and at a competitive cost, while providing full support, consultation, and professional management. We are committed to maintaining high standards of safety, quality, and customer satisfaction in every project we undertake across the Kingdom of Saudi Arabia.





## OUR SERVICES

1. **General Contracting** — Complete management and execution of construction projects.
2. **Building Internal Fit-Out** — Civil structural works, interior finishing, partitions, ceilings, and complete decorative works.
3. **Exterior Works** — External cladding, profiling, fencing, and landscaping.

**Waterproofing Solutions** — Specialized waterproofing for water tanks, roofs, wet areas, and concrete structures.

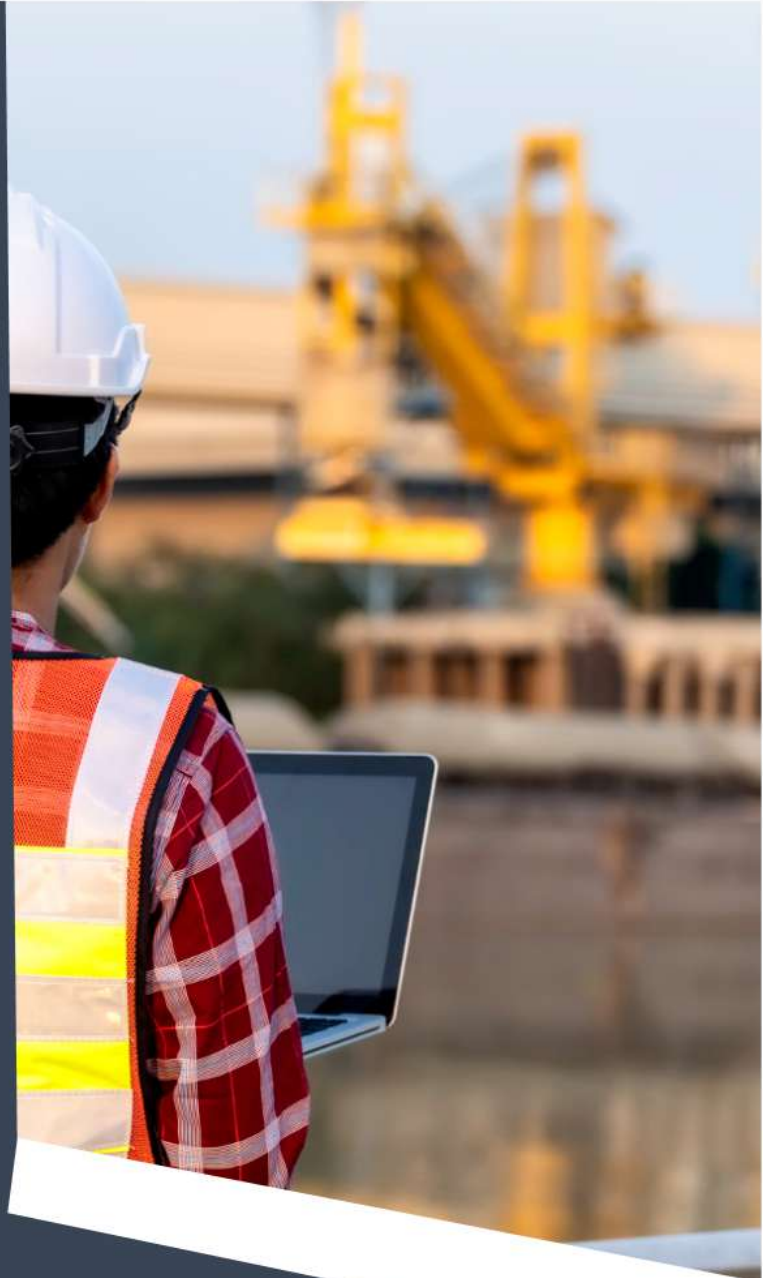
4. **Epoxy Applications** — Epoxy flooring and coatings for parking areas, industrial and residential spaces.
5. **Maintenance & Repair** — Building maintenance, concrete repair, and renovation for residential compounds, showrooms, offices, factories, and warehouses.
6. **Steel Structures** — Fabrication and installation of steel structures for factories, warehouses, sports complexes, and gymnasiums.
7. **Management & Support Services** — Project supervision, manpower supply, and technical support to ensure quality and timely delivery.

# OUR VISION

Our vision is to be recognized as one of the leading construction and fit-out companies in the Kingdom of Saudi Arabia, known for delivering exceptional quality, innovative solutions, and reliable services. We aim to build long-term partnerships with our clients by maintaining the highest standards of safety, sustainability, and professionalism, and by contributing to the growth and development of the construction industry in the region.

Our vision is to be recognized as one of the leading construction and fit-out companies in the Kingdom of Saudi Arabia, known for delivering exceptional quality, innovative

solutions, and reliable services. We aim to build long-term partnerships with our clients by maintaining the highest standards of safety, sustainability, and professionalism, and by contributing to the growth and development of the construction industry in the region.







## WHY DISTINGUISH US

### 1 Proven Experience

---

Global Building Completion Company (GBCC) has been delivering outstanding construction and fit-out services in the Kingdom of Saudi Arabia since 2010. With over a decade of hands-on experience, GBCC has successfully completed diverse projects for the government, semi-government, and private sectors — including luxury hotels, large-scale residential housing schemes, schools, showrooms, industrial facilities, and infrastructure works

### Specialized Services

---

GBCC provides a full range of specialized services covering general contracting, civil and structural works, interior and exterior finishing, complete fit-out solutions, waterproofing for roofs, tanks, and wet areas, epoxy flooring for industrial and residential spaces, fencing, external cladding, and concrete repair.

### Professional Project Management

---

GBCC operates with a clear and structured organization, supported by professional project management and strict quality control measures. The company has a dedicated Quality Control Program that outlines every aspect of construction inspection, testing, material control, calibration, vendor control, and non-conformance management.



# OUR STYLE

Our mission is to deliver high-quality construction and finishing services that exceed our clients' expectations. We aim to complete every project on time and at a competitive cost, while providing full support, consultation, and professional management. We are committed to maintaining high standards of safety, quality, and customer satisfaction in every project we undertake across the Kingdom of Saudi Arabia.

---

Our mission is to deliver high-quality construction and finishing services that exceed our clients' expectations. We aim to complete every project on time and at a competitive cost, while providing full support, consultation, and professional management. We are committed to maintaining high standards of safety, quality, and customer satisfaction in every project we undertake across the Kingdom of Saudi Arabia.

---

Our mission is to deliver high-quality construction and finishing services that exceed our clients' expectations. We aim to complete every project on time and at a competitive cost, while providing full support, consultation, and professional management. We are committed to maintaining high standards of safety, quality, and customer satisfaction in every project we undertake across the Kingdom of Saudi Arabia.



# OUR HUMAN CARDS

At Global Building Completion Company (GBCC), our strength lies in our people. We maintain a well-organized team of highly qualified professionals, skilled tradesmen, and dedicated support staff who work together to deliver projects efficiently and to the highest standards.









شركة انجاز البناء العالميه  
GLOBAL BUILDING COMPLETION COMPANY

# GLOBAL BUILDING COMPLETION COMPANY

## CONTACT US



0563265594



[contact@gbcc.com.co](mailto:contact@gbcc.com.co)



[web-www.gbcc.com.co](http://web-www.gbcc.com.co)



**DISTRICT-AL SALAMA  
JEDDAH -KSA**

A full-page background image showing the silhouettes of several construction workers on a building site. They are working on a structure with many vertical rebar rods protruding. The scene is set against a bright, hazy sunset sky with the sun low on the horizon, creating a strong backlight effect. The workers are wearing hard hats and carrying tools. The overall color palette is dominated by warm yellows, oranges, and dark silhouettes.

# OUR SERVICES



## REINFORCEMENT CONCRETE STRUCTURE

We have Strong skills in concrete structure design, construction, and installation involve a combination of technical knowledge, practical experience, and problem solving abilities. This includes understanding concrete properties, construction techniques, building codes, and safety regulations, as well as having hands-on experience in various concrete work, like pouring, finishing, and repairing. Additionally, effective communication and leadership skills are crucial for successful project management in this field



## REINFORCEMENT CONCRETE STRUCTURE

We have, expertise in steel structure fabrication installation, Planning and Design: Fabrication Erection Connection: Safety Quality Control: is a valuable skill, and there are.





## INTERIOR FINISHING



Interior finishing work encompasses the final stages of construction or renovation, focusing on aesthetic and functional elements that enhance a space's appearance and usability. This includes tasks like installing flooring, painting walls, adding trim, and installing fixtures like cabinetry and lighting. Essentially, it's the process of making a building or space look and feel complete and ready for occupancy

## EXTERIOR FINISHING AND DESIGN

- External building finishes for towers and buildings can vary widely depending on the desired aesthetic, budget, and performance requirements. Common choices include cladding (glass structure (like ceramic, wood, or metal)), exposed concrete, and various types of siding like stucco, vinyl, or fibre cement.



## WATER PROOFING SYSTEM

we are experts in all types of waterproofing" suggests a company or individual who claims proficiency in applying various waterproofing methods and materials to protect structures from water damage. This includes a range of techniques and materials used to create a barrier against water penetration, like liquid-applied membranes, sheet membranes, and cementitious coatings. polyurethane









## CAR PARKING WALKWAYS AND WARE HOUSES FINISHING & IMPLEMENTATION

**EPOXY CAR PARK:** We are implementing with expertise the Epoxy finishing with divider lines arrows, savages all car parking system impletion -sub grade, sub base and top finishing implementation



## ASPHALT CAR PARK

we have expertise and specialized teams and equipment and machinery for Asphalt finishing car parking (including preparation of grade level, Bas and sub base preparation asphalt proving and marking to hand over with complete system





## STAMP CONCRETE

Stamped concrete, also known as imprinted or textured concrete, is a decorative concrete technique where patterns and textures are pressed into the surface of freshly poured concrete. This allows concrete to mimic the look of other materials like brick, slate, flagstone, tile, or wood. It's a versatile and popular method for enhancing the appearance of patios, driveways, walkways, and other concrete



## FLAT CONCRETE WAREHOUSES FINISHING

Flat concrete finishing in a warehouse involves creating a level, smooth, and durable surface that can withstand heavy traffic and loads. This process typically includes placing, consolidating, and finishing the concrete to achieve the desired flatness and levelness. Proper finishing is crucial for functionality, safety, and the overall longevity of the warehouse floor.





## BRUSH CONCRETE

Brushed concrete, also known as broom finish concrete, is a type of concrete surface finish created by dragging a brush or broom across freshly placed and levelled concrete to create a textured, slip-resistant surface. This technique is commonly used for outdoor areas like driveways, patios, and walkways, enhancing safety by improving traction,



## LAND SCAPING AND HARDSCAPING

We are specialized in designing and implementing landscaping and hardscaping. This means creating a plan for the outdoor space, incorporating both natural elements like plants and trees, and non-living features such as patios, walkways, and walls. The process includes design, planning, and then the physical construction and installation of both the softscape (plants) and hardscape (non-living elements)



WE designing and paling the tennis and basketball playground in KSA, consider the following: location, court dimensions, surface type, drainage, fencing, and lighting. For the best results, tailor the design to the specific use case (recreational, school, or professional) and prioritize durability, low maintenance, and safety, especially given the local climate

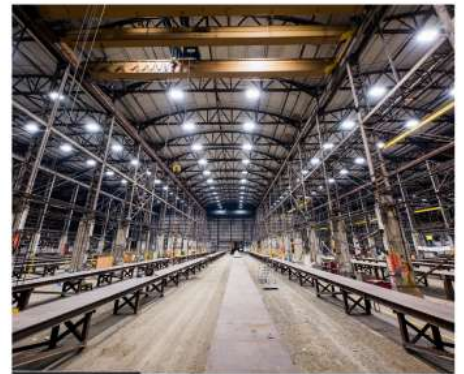




## INDISTRIAL ELECTRIC:

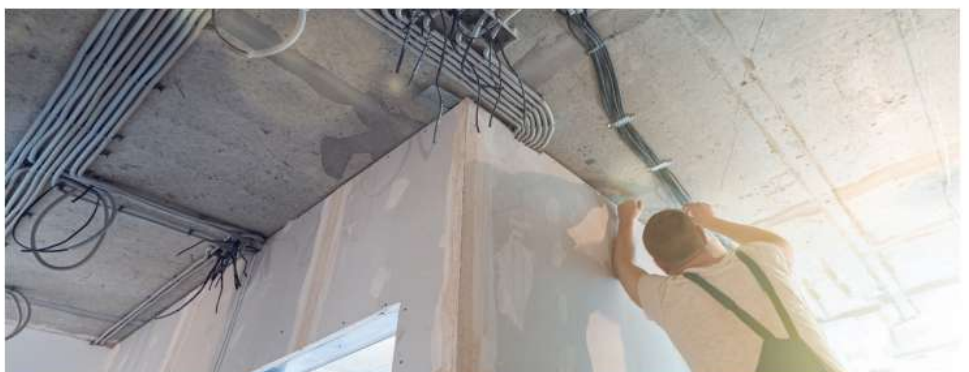
Industrial electrical work encompasses the installation, maintenance, and repair of electrical systems in factories, plants, and manufacturing facilities. It involves working with large-scale, complex systems, including high-voltage equipment, and ensuring the safe and efficient operation of industrial machinery and processes.



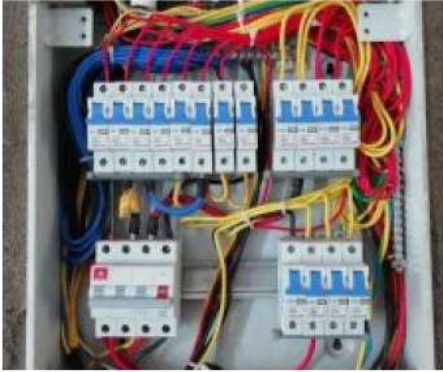


## **RECIENDIAL, MALLS AND CARSHOROOM ELECTRIC POWER AND DECORATIVE CIELLING LIGHTING SYSTEM**

Residential building electrical systems involve the design and installation of wiring, outlets, switches, and other components to distribute power safely throughout the building. This includes the main electrical panel, individual circuits, and connections to various appliances and lighting fixtures. Key aspects include proper wiring (like NM-B cable), circuit breaker protection, and adherence to electrical codes and safety standards







## **WATER SUPPLY AND DRAINAGE SYSTEM INDUSTRIAL AND RESIDENTIAL**

WE ARE DESIGN AND IMPLEMENT PLUMBING" WE GBCC that provides both the design and installation of plumbing systems for buildings. This includes designing the layout of water supply, drainage, and potentially gas systems, as well as physically installina the pipes, fixtures, and other necessary components





## AIRCONDITONING (HVAC)

company that offers design, fabrication, and installation services for HVAC (Heating, Ventilation, and Air Conditioning) systems is describing their core business. They handle the entire process, from initial design and engineering to the physical construction and setup of the HVAC system within a building. This typically includes creating detailed plans, fabricating custom components, installing the system, and ensuring it meets the required specifications and safety standards



**OUR PROJECT AND  
EXPERIENCE INNOVATION AND  
PREE- QUALIFICATION**





# OASIS HOTEL AMIR FAWAZ





**LOBBIES AND TERRACE**





## UTILITIES TUNNEL INTERIOR FINISHING KAFD -RIYADH



# AL\_RAIDAH COMPLEX AND RENOVATION PROJECT





**NHC -HOUSING - JIZAN KSA**



# NHC - PROJECT - ALDRB JEZZAN





# **JULPHAR PHARMACEUTICAL PLANT KING ABDULLAH ECONOMIC CITY RABIGH**



## ALJOMAIH CAR SHOWROOM AND WORK SHOP JEDDAH





# FAMCO - JEDDAH MAKKHA ROAD



# GOVERNMENT BUILDING AT KUDDAI MAKKAH





# BOYS AND GIRLS SCHOOLS MAKKAH



# NHC VILLA HOUSING PROJECT JEDDAH -KHULAIS





# MASAR MALL -MAKKA UNDER PROGRESS



# NHC-HOUSING PROJECT TAIF UNDER PROGRESS





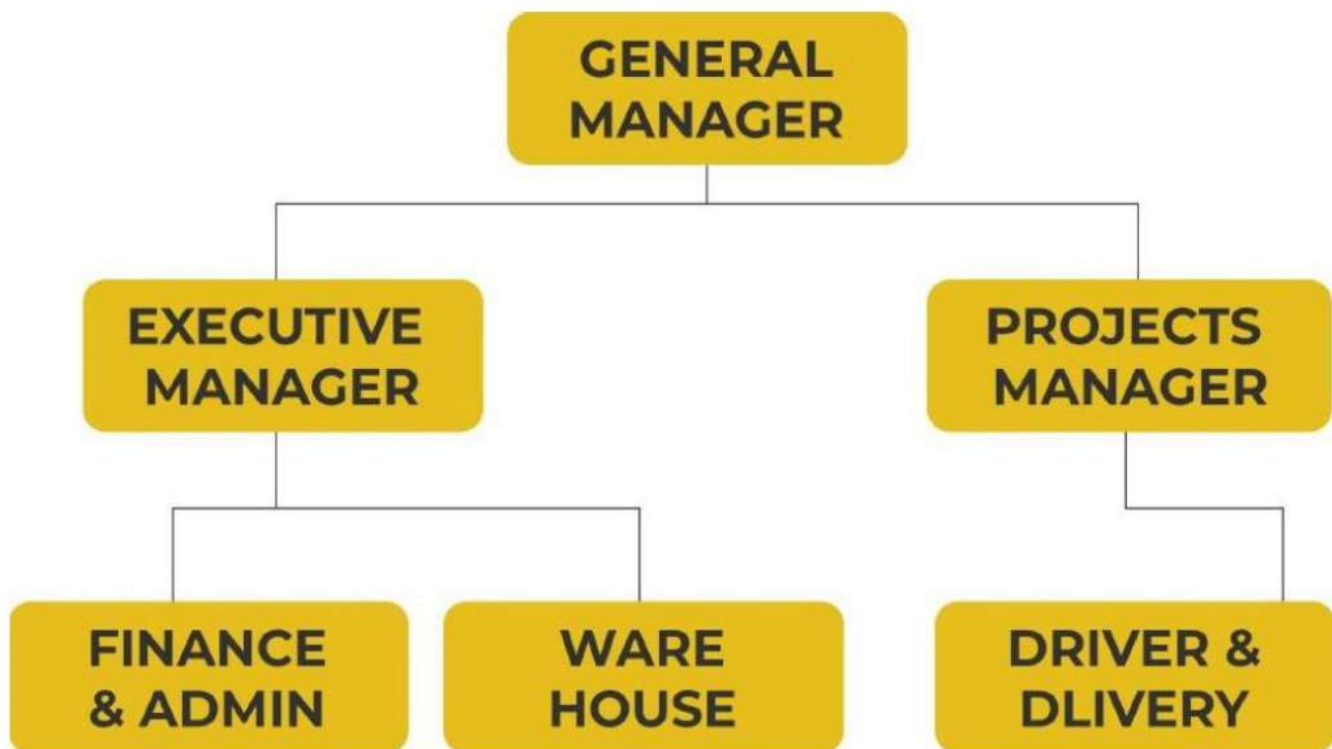
# NHC- HOUSING PROJECT - JEDDAH -KHULAIS



# COMPLETED ASPHALT PROJECT IN DIFRENCE AREAS







LIST OF MANPOWER

CLASSIFICATION	JOB DISCREPTION	TOTAL
MANAGEMENT ADMINISTRATION	General Manager	1
	Managing director	1
	Accountant	2
	Operation manager	1
ENGINEERING	Projects Managers	4
	Projects Engineers	4
	Supervisor /Forman	6
SKILLED /UNSKILLED	STRUCTUR+ FINISHING	200
	Tile Installers Painters	
	Gypsum board installers	
	Interior Exterior fitters	
	MEP	
	Water proofing and Epoxy applicator	



# LIST OF EQUIPMENT AND TOOLS

EQUIPMENT & TOOLS TYPES	BRANDS	TOTAL	REMARKS
MARBLE CUTTING MACHINE	German	2	For site use manual
PORCELAIN AND CERAMIC CUTER AND LASER CUTTING BLADE FIX CUTTING MACHINE	BOSCH	4	For site use manual
GRINDERS	Bosch and chines	10	Auto manual for site use
ADHESIVE AND GROUT MIXTURE	Bosch and chines	4	For site use
CABLE DRUM	Original	10	For site use fully under safety
DIFFERENT HAND TOOLS HAND TOOLS LIKE HAMMER TROWEL ETC MEASUREMENT TAPES AND MANUAL LEVELS	Different	60	Manual
WOODEN SAW	Local-KSA	2	Automatic
HAND SAWA	Different	10	Manual
DRILLS FOR HOLES AND SCREW DRILL	Bosch -and other brands	20	Chargeable & Auto - ELECTRIC

EQUIPMENT & TOOLS TYPES	BRANDS	TOTAL	REMARKS
WATER PROOFING POLYURETHANE SPRAY FOAM APPLICATION MACHINE	Italian		For water proofing application
LIGHT WEIGHT FOAM CONCRETE MACHINES	KSA-	2	For roofing systems using
HEATING TORCH & PVC HEATING FIXING MACHINES	KSA	6	For water proofing application
COMPRESSOR AND AIRLESS MACHINES	KSA	4	For cleaning & epoxy application

## APPARATUS

LEVELLING MACHINES	China	2	For site surveyor
LASER MACHINES	German and china	2	For site use flooring ceiling and partition
LASER MEASUREMENT TAPE	Local	4	For site work and quantity measuring
GAS TEST MACHINE	Different	4	For gas leak testing -for safety



## TRANSPORTATION VEHICLE AND OTHERS

EQUIPMENT & TOOLS TYPES	BRANDS	TOTAL	REMARKS
HAND TROLLEY FOR MATERIAL SHIFTING AND PLACEMENT	Different	30	For site work
BUS AND MINI BUS	TATA and HI LUX	5	For worker transport for site using
STAFF CARS	Different	10	For company using during work
PICK UP AND DIANA	ISUZU	2	MATERIAL & FOOD DELEVRYS
CAMERAS -	NIKON	2	For site progress reporting photo collection

# LIST OF MAJOR PROJECTS

o	Description	Owner	Amount -SR	Status	Year	Scope of work
1	Public prosecution building <u>Makkah</u>	Mumlika company Makkah	20,00,0,000	100% Completed	2013	Finishing and decoration internal external Gypsum board & gypsum decoration ceiling Skimming for gypsum board
2	AL-RAJHI FOUR POINTS Hotel BY SHERATOON MAKKAH	AL-RAJHI CO <u>AL-SHATI-CO</u>	800,000	100% Completed	2014-15-16	RENOVATE Gypsum board Water proofing Marbles and tiles
3	Julphar pharmaceutical plant <u>KAEC-Rabigh</u>	ulphar	700,000	100% Completed	2016	Internal and external Finishing maintenance & extension work
4	AL-BAHRIA WARE HOUSE JEDDAH	ARMY	300,000	100% Completed	2016	EPOXY FLOORING & PARKING FINISHING
5	Residential building -at district Al-Safa Jeddah	Mr _Tariq	1,560,000	100% Completed	2017	Gypsum board ceiling Painting Complete system Floors toilet & walls marble & ceramic tiling Water proofing Internal FITOUT Eternal hardscape & profile decoration Parking epoxy finishing



o	Description	Owner	Amount -SR	Status	Year	Scope of work
6	oAsis Hotel Jeddah Amer Fawad -at Makkah road -	Mr _Tariq Hotel's owner	3,200,000	100% Com pleted	2018 -19	Internal demolishing & Disposal Re Build 12 floor & one basement Gypsums' board partition Gypsum board ceiling Painting system Floors toilet & walls marble and ceramic tiling Water proofing And Hotel FITOUT Eternal hardscape & profile decoration Parking epoxy finishing
7	Al-Raidah Renovation project Jeddah north	SAMA CO Al-Raidah development project Jeddah	3,000,000	100% Com pleted	2019	Removal & re installation & finishing Gypsum board, painting, tiles and cleaning polishing
8	KAFD-RIYADH utilities tunnel	New Job CO KAFD	1,100,000	100% Com pleted	2021	Tunnel floor walls & ceiling Epoxy
9	National housing Scheme -NHC Al drab Jizan Region 44 project	CYNO HYDRO CO	11,600,000	100% Completed	2021 -22	Finishing and Roof water proofing System F concrete & roof water proofing system
10	KAFD-P.410-411 And 412 parcels	Shapoorji poolanji CO KAFD Riyadh	600,000	100% Com pleted	2022 -23	Door deco painting Legacy material shifting

12	HASSAN & JABBAR FOR BOYS ASMA & HOLLA FOR GIRLS SCHOOLS -MADRASA	<u>AL-Shati co</u>	23,000,000	100% <u>Completed</u>	2022	All external internal tiling Gypsum board ceiling Cars parking Hardscape interlock and landscaping <u>Water proofing-MEP</u>
13	Aljomaih automotive company showroom & service Centre Jeddah at KILO -06	JOMAIH co	27,000,000	100% Completed	2021-22	Internal FINISHING gypsum board & painting & tiles work Epoxy parking & flooring And Roof water proofing = EXTERNAL CLADDING
14	AL-Futtaim Auto & Machinery Company -Jeddah office building	FAMCO	2,600,000	100% Completed	2022-23	Complete renovation work external internal gypsum board marble & painting & epoxy FLOOR TILING & Roof water proofing complete <u>fitout</u>
15	Aljomaih automotive company showroom & service Centre Jeddah at Amal Street	AL-JOMAIH co	1,000,000	100% Completed	2023	Internal gypsum board & painting & epoxy Roof water proofing
16	RAFFLESS HOTEL JEDDAH	ACC	9,000,000	100% Completed	2023	Gypsum board and painting



17	KAFD-uttilit Tunnel interior finishing	SBCM CO KAFD RIYADH	21,00,000	100% Completed	2023	TREATMENT AND Epoxy finishing for floor walls and ceiling Steel doors painting Expansion joint
18	<u>NHC-HOUSING PROJECT</u> JEDDAH KHULAIS (165 Villas houses	NHC-MCC	21,000,000	100% COMPLETED	2024-25	Rcc struct work- external internal finishing work water proofing roofing system and fence work-MEP complete work
19	MASAR MALL-MAKKA	AL- MADWAR- AND SAAD	2,000,000	20% Completed - in progress	2025-26- 27	Structure packages
20	NHC- HOUSING APARTMENT BUILDING - TAIF	SOCC-CHINA	6,000,000	40% COMPLETED -IN PROGRESS	2024-25- 26	FINISHIN EXTERNAL AND INTERNAL EXTRNAL SCAP - MEP COMPLETE SCOPE

# CERTIFICATE WORK COMPLETION CERTIFICATE





"New Job  
Company

## Certificate of Appreciation

This certificate is presented to

Global Building Completion Company

In recognition and sincere appreciation Of the successful completion Of works in "NJC Civil for Roads and Tunnels" (Riyadh KAFD Project) from August 2021 to March 2022



## CERTIFICATE OF

This is to certify that the Global building

Has

## VIP INTRODUCTORY APPLICATOR

Covering the

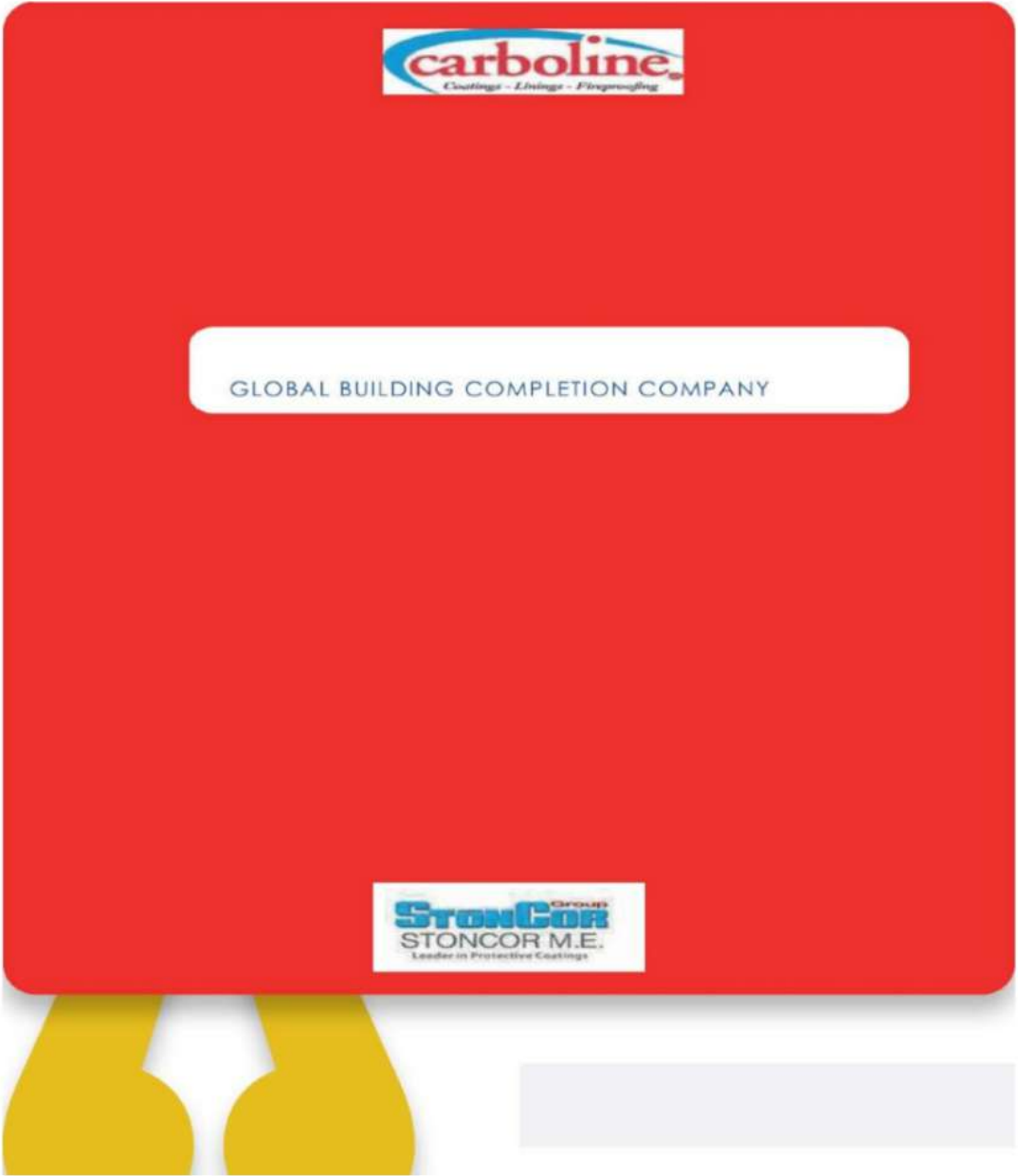
Health and Safety, VIP products, Substrate Preparation, Primers and Priming, Pre-Spray Inspections and Assurance

Date August

Signature

VIP certify that the above named person has completed the above course but does not make any judgement or party has the skills or experience to undertake any particular project. Valid for







FOSROC 11081



Constructive solutions

Ref: AY/FCL/18/23

Date: May 21, 2023.

**TO WHOM IT MAY CONCERN**

This is to certify that "Global Building Completion Company" شركة الجدار البناء العالمية have considered as our certified and approved applicator for following range of applications:

- Industrial Flooring Systems.
- Specialized protective coatings for concrete and masonry.

This certificate is issued upon their request without any liabilities on Fosam Company Limited and valid for six months from the date of issuance of this certificate.

Yours sincerely,  
For Fosam Company Limited

**Fosam Company Limited**

Head Office  
PO Box 11081  
Jeddah - 21453  
Saudi Arabia  
C.R. No. 31273  
Paid up Capital: SR3,000,000  
[www.fosroc.com](http://www.fosroc.com)

telephone:  
+966 (2) 637 5345

fax:  
+966 (2) 637 5891

email:  
fosam@fosroc.com



Registered Office: Industrial Area, Phase A, Road No. 474, Street No. 807

# APPROVED APPLICATION CERTIFICATE



## TO WHOM IT MAY CONCERN

NATIONAL PAINT CERTIFIED THAT THE GLOBAL BUILDING COMPLETION COMPANY AND APPROVED APPLICATOR WITH REGARD TO THE APPLICATIONS OF NATIONAL PAINT PRODUCT 'COATING SYSTEM. AS MANUFACTURE OF PAINT COATING TO GLOBAL BUILDING COMPLETION COMPANY FOR NUMBER OF YEARS WE REGARD THEM AS A PROFESSIONAL COMPANY WHO CONSISTENTLY PRODUCE WORK AND WORKMANSHIP TO HIGH QUALITY STANDARD. WE WOULD HAVE NO HESITATION IN RECOMMENDATION THEM TO ANY CLIENTS THIS CERTIFICATE IS ISSUED AND WILL REMAIN VALID BASED ON PRODUCT AND SYSTEM BEING APPLIED AND ARE IN STRICT COMPLIANCE WITH CURRENT TECHNICAL DATA. THIS CERTIFICATE MAY BE REVOKED IF THE CORRECT APPLICATION PROCEDURE OR THE QUALITY OF WORKMANSHIP DOES NOT MEET NATIONAL PAINT STANDARD





## HANDOVER /COMPLETION CERTIFICATE

- Project Name: : FAMCO -JEDDAH AT OLD MAKKA ROAD
- Client: : Al-Futtaim Auto & Machinery Company
- Contractor : Global Building Completion Company
- Reference : Contract
- Completion date : 15-06-2025
- Scope of work. Main office building, workshop building, Spare part sale office building all external internal Renovation and finishing work
- With reference to the subject this is hereby to certify that **Global Building Completion Company** has successfully completed the above-mentioned scope of work with all effort and endeavour. subjects to the term and conditions.

Global Building Completion Company







## HANDOVER /COMPLETION CERTIFICATE

- Project Name: : RED SEA GETWAY TERMINAL CAMP
  - Client: : **Red Sea Getaway Terminal**
  - Contractor : Global Building Completion Company
  - Reference :P. O.32092
  - Completion date : 15-11-23
- 
- Scope of work. Supply and apply polyurethane spray foam and acrylic water proofing coats for one Cabin of Red sea getaway terminal 3 accommodation CAMP Jeddah
  - With reference to the subject this is hereby to certify that **Global Building Completion Company** has successfully completed the above-mentioned scope of work with all effort and endeavour. subjects to the term and conditions.

Global Building Completion Company



Red Sea Getaway Terminal



Date: April 08, 2024

Project: Wadi Streetscape and Landscape (KAFD00257)

Subject: Certification of Completion

**To whom soever it may concern**

We hereby affirm, to the best of our knowledge and belief, based on inspections, observations, testing of the project and upon reports submitted by our Project control, that this **Supply & Installation Works of Epoxy Coatings at Tunnels & Pump Rooms in WADI Project, KAFD Riyadh** is substantially complete and operable. Works were completed in accordance with the department's issued guidelines, by **Global Building Completion Company**.

**Project Name**

Wadi Streetscape and Landscape (KAFD00257), KAFD, Riyadh, KSA

**Project Description**

The scope works consist of:

- AREA 1 Completion of Civil & Finishing Works for the Ground, Subterranean & Tunnel (Packages C01C, C01B)).
- Area 01 Public Realm Hardscape Section 2 - 5(Phases 6 , 7, 8, 9, 10, 11, 12 & Remaining parts of Phases 5).
- Area 01 Public Realm Hardscape Inner Ring Road Right-of-Way Part 1, Part 2, Part 3, Part 4 and Part 5.
- Area 01 Public Realm Hardscape Completion Works of Section 1.
- Construction of WADI 3A-1, WADI 3A-2, WADI 7-5B.

Completion date: 31<sup>st</sup> Dec. 23

Regards,

Ahmad Al Qadoumi

QAQC Manager




شركة إدارة  
المباني والانشاءات  
المستدامة  
جدة المقر الرئيسي  
مكتبة 1-2  
جندل سكوئر  
+966 11 738 0199 هـ  
+966 11 738 0199 ر  
الرياض  
مكتبة 813  
جندل سكوئر  
+966 11 460 2883 هـ  
+966 11 460 2885 ر  
www.sbcm-sa.com info@sbcm-sa.com

SAUDI BUILDING  
& CONSTRUCTION  
MANAGEMENT  
Jeddah Head Office  
Office N° 282  
Jamel Square  
T: +966 12 664 4172  
F: +966 12 668 6645  
Riyadh  
Office N° 413  
Russein Tower  
T: +966 11 460 2883  
F: +966 11 460 2885  
info@sbcm-sa.com

CLIENT	PMC	CONSULTANT	CONTRACTOR
			

Document Submittal Form					
Submittal Ref:	MCC-OEC-MK01-REP-DOC -00015	Rev No:	00	Date:	6-JULY-2024
Program Title:	Developmental Housing Program Wave#1 (Contract No.: C1800069)				
Project Title:	Developmental Housing Program for Khulais				
The Employer:	National Housing Company (NHC)				
PMC:	DAR AL RIYADH				
Consultant:	Oman Engineering Consultant				
Contractor:	Metallurgical Corporation of China Ltd. (MCC)				

Guidance notes:					
The submission should only include documents which are deemed compliant with the SOPR, Applicable Codes and have been reviewed and coordinated between the Contractor and Designer (and Engineer if applicable) and should include any authorised variations/changes as instructed.					
Review Discipline					
Architectural	<input type="checkbox"/>	Structural/Civil	<input type="checkbox"/>	Mech/Plumb	<input type="checkbox"/>
Elec.	<input type="checkbox"/>	Others (specify		<input type="checkbox"/>	
Document Details					
Notes: PMC review will recommend either Objection or No Objection to each item. Non-Objected shall be issued to the NHC with the recommendation to approve. Objected shall be returned to the Contractor with an Objection report.					PMC Review
Proposed by:					
The Contractor		The Consultant (Designer & The Engineer)			
Sign/Stamp		Sign/Stamp			
Ser No:	Document Title/Description:	Reference No:	Rev No:	Remarks	
	PQ of Global Building completion company	-24-05062	1		
Reviewed for compliance by:					
Notes: The Engineer* shall review and approve when the Supervision Consultant differs from the Designer only. PMC shall only issue recommendations based upon 'No Objection' to the Client. Any 'Objections' shall be returned to the Contractor with a review report for action and may be copied to the NHC when necessary.					

THE ENGINEER	Review Date:		Rejected	Approved	Signed: 
	Print Name:	Eng: Hussien Saad			
PMC	Recommendations to NHC Date:		Objection	No Objection	Signed:
	Print Name:				
NHC	Review Date:		Objection	No Objection	Signed:
	Print Name:				





# COMPANY REGISTRATION CERTIFICATION



وزارة التجارة  
Ministry of Commerce



خريطة التجزئة العامة

السجل التجاري: 4030343940

رمزك التجاري QR Code

من خلاله يمكنك التحقق المباشر من المعلومات:

- السجل التجاري
- رخصة البلدية
- شهادة السعودة
- برنامج نطاقات
- شهادة الزكاة
- الفرقة التجارية

www.mc.gov.sa

MCgovSA

.....

.....

٧٠١٣٢٨٤٢٧ : الرقم القومي

٤٠٣٠٣٤٣٩٤٠ : رقم السجل

١٤٣٩/١١/٠٢ : التاريخ

شهادة تسجيل الشركة

Company Registration Certificate



وزارة التجارة  
Ministry of Commerce

الاسم التجاري للشركة : شركة تجزئة البناء العامة

نوعها : ذات مسؤولية محدودة

مدة الشركة : ٥٠ سنة من : ١٤٤٩/٠٥/١٨ : انتهاء

مركزها الرئيسي : جدة حي السلامة طريق المدينة المنورة

هاتف : ٢٢٥٣١ : الرقم البريدي

النشاط : لتأجير على بنات الأنشطة تجارة مساح الرمز التجاري

رأس المال : ٢٠٠٠٠٠٠ ريال سعودي

المديرون : ١ : ياسر محمد بن عياد عسوي

٢ : 3

4 : 5

6 : 7

8 : 9

10 : 11

12 : 13

14 : 15

16 : 15

سلطات المديرون : حسب ما أقر عليه عقد الشركة

يشهد مكتب السجل التجاري بمدينة : جدة

بأنه تم تسجيل الشركة المذكورة أعلاه بمدينة : جدة

وتنهي صفة السجل التجاري في : ١٤٤٩/٠٩/٠١ : بموجب الإجمالي رقم : ٢١١٤٣٩٥٢٢٤

والتاريخ : ١٤٤٩/٠٩/٠٧



يتم التحقق من صحة هذه الشهادة على الموقع الإلكتروني: [www.mc.gov.sa](http://www.mc.gov.sa)

MCgovSA © ٢٠٢٠ | Kingdom of Saudi Arabia | المملكة العربية السعودية | Riyadh 11566 | ٢٢٥٣١



رؤية  
2030  
Saudization Vision  
VISION OF SAUDI ARABIA



المركز السعودي للأعمال  
Saudi Business Center



وزارة التجارة  
Ministry of Commerce

**السادة / شركة انجاز البناء العالمية**

نسأل الله أن يكتب لكم التوفيق والنجاح في عملكم التجاري وأن تكونوا شريكاً في تعزيز اقتصاد المملكة العربية السعودية.

**يسرنا إبلاغكم بأن رقم منشأتكم الموحد هو**

**٧٠١٢٨٢٨٤٢**

وقد تم ربطه بالخدمات الحكومية التالية..

<p><b>٥٢٥٧٥٩٨٢٩</b></p> <p>رقم منشأتكم</p>	 <p>الوزارة العامة للاستثمار والاستثمار Ministry of Investment</p>
<p><b>٢٢٢٤٥٥</b></p> <p>رقم منشأتكم</p>	 <p>الجمعية العامة لchambers السعودية Federation of Saudi Chambers</p>
<p><b>لا يوجد</b></p> <p>رقم منشأتكم</p>	 <p>بلدي balady</p>
<p><b>٢١٠٠٦١٧٤٤٤١</b></p> <p>رقم منشأتكم</p>	 <p>سبل</p>
<p><b>٢٠٢٢٧٩٢٧٧٩</b></p> <p>رقم منشأتكم</p>	 <p>هيئة الزكاة والضريبة والجمارك Zakat, Tax and Customs Authority</p>

**للاستفادة من الخدمات المقدمة من الجهات الحكومية**



**دليل التاجر**





MCgovSA

mc.gov.sa

\*\*\*\*\*



تاريخ الإصدار: 2023/01/30  
الرقم المميز: 3112154677



الهيئة العامة للزكاة والدخل  
General Authority of Zakat & Tax



### شهادة تسجيل في ضريبة القيمة المضافة

#### VAT Registration Certificate

تشهد الهيئة العامة للزكاة والدخل بأن المكلف أدناه مسجل في ضريبة القيمة المضافة بتاريخ 2023/01/30

Hereby, The General Authority of Zakat & Tax (GAZT) certifies that the taxpayer below is VAT registered on 30/01/2023

Taxpayer Name:	شركة انجاز البناء العامة	اسم المكلّف:
VAT Registration Number:	311215467700003	رقم التسجيل الضريبي:
Effective Registration Date:	2023/02/01	تاريخ نفاذ التسجيل:
Taxpayer Address:	جدة، المنطقة، بحصة المكر 24245	عنوان المكلّف:



كمكلف مسجل في ضريبة القيمة المضافة، لا يجوز لك تحصيل ضريبة القيمة المضافة من عملائك قبل تاريخ نفاذ التسجيل بالضريبة. في حال تبين غير ذلك، ستقوم الهيئة العامة للزكاة والدخل بتنفيذ العقوبات المستحقة.

**هذه الوثيقة مرسلة من النظام الآلي ولا تحتاج إلى توقيع**  
- الهيئة العامة للزكاة والدخل -

Proof Number: 1043048805  
 Original Date: 9/12/2023  
 Expiration Date: 6/6/2024



العنوان الوطني  
NATIONAL ADDRESS

### إثبات عنوان

#### Address Proof

#### بيانات صاحب العنوان

Name: شركة انجاز البناء العامة

Customer Add: 3 1 3 0 5 4 2 8 6 6 6 4

Reg. Date: 23/12/2020

#### تفاصيل العنوان

Short Address: J E S A B 2 5 6

Building No: 8 2 8 6

Branch: Al Madinah Al Munawwarah Branch Rd

Secondary No: 3 7 5 4

Postcode: 2 3 4 3 7

City: JEDDAH

Kingdom of Saudi Arabia

الاسم: شركة انجاز البناء العامة

رقم الحساب: 8 2 8 6 6 6 4

الرجوع المسجل: 23/12/2020

الشارع: طريق المدينة المنورة غرب

الحي: حي السلامة

الرمز البريدي: 2 3 4 3 7

المدينة: جدة

المملكة العربية السعودية



To Verify للتحقق  
<https://portal.nadrasa.gov.sa/VerifyProofNA>

تم إصدار هذا الإثبات إلكترونياً ولا يتطلب التوقيع عليه. تم إصدار هذا الإثبات بناءً على طلب الموضح أعلاه، ويحظر قطعياً تقليده أو إدخال أي تعديلات عليه سواء بالإضافة أو الحذف، وبعد الإثبات لاغياً إذا شابه شيء من ذلك، كما يعرض صاحبه للمساءلة القانونية.

This proof has been issued electronically and does not require a signature. This proof has been issued upon the request of the above-named, and it is absolutely prohibited to imitate it or make any modifications to it, whether by addition or deletion, and the proof is considered void if it is marred by something, and its owner is subject to legal accountability.

19992 <https://api.time.com.sa/en/national-address/>





شهادة اشتراك

Membership

This is to certify that نشهد بأن

شركة انجاز البناء العالمية

Not Available

Is a member in the chamber الغرفة التجارية

البوابة الموحدة  
للغرف السعودية



Certificate Date	01/08/2024 - 26/01/1446	تاريخ طباعة الشهادة
Date of Membership	18/12/2023 - 05/06/1445	تاريخ الاشتراك
Date of Expiry	02/12/2024 - 01/06/1446	تاريخ الانتهاء
Subscription Status	فعال	حالة الاشتراك
NUN	7013828483	رقم المنشأة الموحدة
Membership No	222455	رقم الاشتراك
Membership Degree	الرابعة	درجة الاشتراك
Commercial Record/ License	4030343940	الرخصة / السجل التجاري
P. O. Box	2335541	صندوق البريد



التوقيع  
محمد أحمد المطاس  
مدير إدارة شؤون المشتركين







## GLOBAL BUILDING COMPLETION COMPANY

OFFICE ADDRESS

ADDRESS

mob / 0563265594

CR-4030343940

Email / [engirshad@gbcc.com.co](mailto:engirshad@gbcc.com.co)

*Thank you!*